



Company Profile

Steelcon Pty Ltd was first established in 1967. For the past thirty years Steelcon Pty Ltd has been active in the construction, fabrication, and maintenance industry throughout Queensland and the Northern Territory. The first branch was established in Mount Isa, and has been the mainstay of the operation since.

Mr Alonso began work for Steelcon Pty Ltd in 1972 working as a crane operator and rigger, becoming manager of the Mount Isa branch in 1986. In 1993 Mr Alonso established **Steelcon** which employs over 40 personnel, all operating from our large modern workshop in Mount Isa. The company is now trading as **Steelcon Cava Pty Ltd**. We also have a large workshop in Brisbane and an extensive workforce in labour and machinery hire based at Birla Mt Gordon Gunpowder mine site.

Steelcon Cava Pty Ltd specialises in:

- ⇒ Light to Heavy Fabrication of Structural Steel
- ⇒ Pipe Fabrication and Laying
- ⇒ Storage Bins/ Tanks for the Mining Industry
- ⇒ Demolition and Erection of Steel Structures
- ⇒ Demolition and Erection of Concrete Structures
- ⇒ Civil Engineering
- ⇒ Bulk Earthworks
- ⇒ Water Retaining Structures
- ⇒ Operation, Maintenance and Repair Services
- ⇒ Plant Hire, Heavy & Light Machinery Hire
- ⇒ Crushing & Mining Operations
- ⇒ Labour Hire
- ⇒ Auto Electrical & Air-conditioning repairs to all vehicles
- ⇒ Mining and Industrial Electrical works
- ⇒ Hydraulics and Hose fittings

Steelcon Cava Pty Ltd operates a large Plant Hire division, which offers the services of 8tonne to 100tonne capacity cranes, excavators, loaders, trucks, cherry pickers, etc. For a complete list of plant available see Appendix A.

Steelcon Cava Pty Ltd have the facility to provide Labour Hire requirements, which include Project Engineers, Site Engineers, Crane Operators, Plant Operators, Diesel Fitters, Hydraulic Fitters, Boilermakers, Riggers, Builders, Carpenters, Auto Electricians and Trade Assistants.



Foreword

Steelcon Cavapty ltd was first established in 1967 and for the past 30 years Steelcon Cava has been active in the construction, fabrication and maintenance industry throughout Mount Isa and the surrounding districts. The first branch was opened in Mount Isa in 1986 and has been the mainstay since. The company being owned by Mr. Guillermo Alonso since 1993 with Adrian Hogue being general manager for the Queensland region, accompanied by Telma Martinez as administration manager is a team who have overcome a huge challenge throughout the years to make the company a resounding success. Mr. Guillermo Alonso being a man who takes pride in his company and employees also likes to help the local community where and when he can.

Steelcon Cava have many branches and serve the industry to the best of their ability. They have 40 employees in the Mount Isa office and have the facility to employ overseas labour through immigration policy which gives Steelcon Cava the ability to serve Xstrata mine site and other businesses in its surrounding areas with machinery and labour hire. The second main branch being situated at Mount Gordon mine site which is 145 kilometers east of Mount Isa serving Aditya Birla with its highest quality machinery and labour hire. Also specialising in civil engineering, steel/concrete structures and any other projects Mount Gordon may require from our team.

Steelcon Cava has the facility to provide a high standard of positions required, including labour hire, hydraulic fitters, boilermakers, riggers, builders, carpenters, electricians and trade assistants. Steelcon Cava is involved in commercial contracting in the area of construction and heavy engineering. The company constructs bridges, culverts, erects steel structures and undertakes general concrete work, demolitions and the hiring out of labour and equipment. Our mission is to ensure customer satisfaction throughout the projects we are involved in. The company's intention is to maintain through our quality management system, a level of quality and reliability of supply that will equal or surpass the expectations of our most valued customers. The involvement and dedication of our professional staff is unsurpassed, ensuring our reputation for satisfaction is guaranteed.

Steelcon Cava has recently purchased a fleet of new machinery from eagle equipment as our company is expanding and we want to provide the best quality of equipment to our value customers.

Steelcon Cava has many branches and specialise in many areas of expertise for example:

18T to 100T crane hire

Loaders, excavators, backhoes, bobcats, dump trucks, water carts, tip trucks, concrete plant with agitators, screening plant and step decks

Light to heavy fabrication of structural steel

Pipe fabrication

Pipe laying

Demolition and erection of steel structures

Demolition and erection of concrete structures

Civil engineering

Bulk earthworks

Water retaining structures

Equipment and labour hire

Painting and high pressure water blasting

Operation, maintenance and repair services

Storage bins and tanks for mining industries

Steelcon Cava's highlights of the year being the purchase of a Hydraulink franchise that services the Mount Isa and outlying regions, specialising in hydraulic fittings and assembly of all hydraulink fittings required on request. Also the completion of four new sheds constructed in Mount Isa with the help of being able to source the steel from one of Xstrata's structure that was demolished on the lease by Steelcon Cava. One shed being our upgraded large modern workshop and office and three being leased out to other businesses. Also the construction partnership and development of the environmental facility at Mount Gordon between Bioteq water Australia and Steelcon Cavapty Ltd.

ADRIAN HOGUE
GENERAL MANAGER



COMPANY DETAILS

Name: **Steelcon Cava Pty Ltd**

Address: No 4 Northridge Road
Mount Isa, Qld 4825
Australia

1130 Kingsford Smith Drive
Eagle Farm, Qld 4009

Telephone: 07 4743 3766 (Mount Isa)
07 3630 2577 (Eagle Farm)

Facsimile: 07 4743 8909 (Mount Isa)
07 3630 2677 (Eagle Farm)

Email: steelconcava2@bigpond.com (Mount Isa)
g.alonso@bigpond.net.au (Brisbane)

A.B.N. 65 127 174 976

Owner: Guillermo Alonso

Qld Manager: Adrian Hogue

Company Secretary: Telma Martinez

Financial Details

Bankers: Westpac Bank, Mount Isa Branch

Accountants: Robin D Huston & Co, Brisbane

Contact: Mr Robin Huston

Credit References

<u>Company</u>	<u>Phone No.</u>
Komatsu	07 4743 8836
OneSteel Distribution	07 47434089
Haymans Electrical	07 47430233
Hastings Deering	07 4743 3288
Advantage Tyres	07 4749 4641



ASSOCIATED COMPANIES

Alonso Equipment Hire Pty Ltd

Address: No 4 Northridge Road
Mount Isa Qld 4825
Phone 07 4743 3766
Fax 07 4743 8909

Managing Director: Mr. Guillermo Alonso

Services: **Alonso Equipment Hire Pty Ltd**
offers an extensive range of
equipment for hire at competitive
rates. Our plant includes:

18t to 100t Hydraulic Cranes
Excavators, Loaders
Backhoes, Bobcats, Dump
Trucks, Water Trucks,
Tip Trucks, Forklifts,
Graders, Up to 127Ft
Boomlifts, and many other
miscellaneous equipment



Contacts

Owner / Director:

Mobile:

Head Office Phone:

Head Office Fax:

Brisbane Office Phone:

Brisbane Office Fax:

Email:

Mr. Guillermo Alonso

0412 162 407

(07) 4743 3766

(07) 4743 8909

(07) 3630 2577

(07) 3630 2677

g.alonso@bigpond.net.au / steelconisa@bigpond.com**Overseas Offices:****SPAIN:**

Phone/Fax:

0011 34 985 134 879

Mobile:

0011 34 625 696 967

SWITZERLAND:

Phone:

0011 41 323 310 201

Fax:

0011 41 323 310 201

HONG KONG:

Address:

Suite 1801 – 1802
Alliance Building
130-136 Connaught Road
Sheung Wan, Hong Kong

Phone:

0011 85 228 157 187

Mobile:

0011 85 225 438 088

Email:

loginpcs@netvigator.com**General Manager:**

Head Office Phone:

Mr. Adrian Hogue

(07) 4743 3766

Head office Fax:

(07) 4743 8909

Mobile:

0412 416 257

Email:

steelcongp@bigpond.com**Manager / Civil Engineer:**

Mobile:

Mr. Gabriel Peña

0412 340 776

Email:

gabriel.steelcon@bigpond.com**Projects Engineer:**

Mobile:

Mr. Vijay CataramRushikesh

0438 728 316

Email:

vijay.steelcon@bigpond.com



STEELCON CAVA PTY LTD ACN 127 174 976

Head Office:
PO Box 1613, No 4 Northridge Road
Mount Isa Qld 4825
4009
Phone: 07 4743 3766 Fax: 07 4743 8909

PO Box 1552
1130 Kingsford Smith Drive
Eagle Farm Qld

Phone: (07) 3630 2577 Fax: (07) 3630 2677

ENVIRONMENTAL AND COMMUNITY POLICY

Steelcon Cava Pty LTD is committed to proactive Environmental and Community Management.

Steelcon Cava PTY LTD management, employees, subcontractors and visitors will perform all activities in accordance with current environmental legislation, approvals, commitments and conditions relevant to the specific activity and Client specifications.

All personnel have a general duty during the execution of works to preserve and protect the natural environment in the area of the site and the external areas that may be affected.

All Steelcon Cava PTY LTD management, employees, subcontractors and visitors will:

- Undertake an assessment of environmental issues to be considered prior to commencing new activities.
- Evaluate on an annual basis all activities in relation to environmental impact.
- Assess the full life cycle of products and promote responsible use and recycling where technically and economically feasible.
- Establish, maintain and seek continuous improvement through procedures and methods to minimize environmental disturbance.
- Maintain amongst employees, subcontractors and visitors an awareness of their environmental responsibilities.
- Display respect for the Community's view of responsible behaviour in relation to environmental matters, and display timely and effective communication in reference to any activities that may cause external effect.
- Respect and acknowledge sites of cultural significance.
- Build relationships with the community based on openness and involvement.
- Provide information as required to Client's Environmental and Community Representatives.

The responsibility for ensuring the implementation of this policy resides with Steelcon Cava PTY LTD Managing Directors. All personnel working within our Company have an equal responsibility to conduct themselves in a manner which strives to ensure the implementation of this policy.

Mr Adrian Hogue
Managing Director
1st July 2009



STEELCON CAVA PTY LTD ACN 127 174 976

Head Office:
PO Box 1613, No 4 Northridge Road
Mount Isa Qld 4825
Phone: 07 4743 3766 Fax: 07 4743 8909

PO Box 1552
1130 Kingsford Smith Drive
Eagle Farm Qld 4009
Phone: (07) 3630 2577 Fax: (07) 3630 2677

HEALTH AND SAFETY POLICY

SteelconCava Pty LTD is committed to the highest standard of Occupational Health and Safety.

It is our policy that the health, safety and well-being of employees, visitors and other parties shall not be adversely affected whilst working for, or with SteelconCava Pty LTD.

SteelconCava Pty LTD management, employees, subcontractors and visitors will perform all activities in accordance with current Workplace Health and Safety legislation, approvals, commitments and conditions relevant to the specific activity and Client specifications.

All personnel have a prime responsibility during the execution of works to ensure that they do not place themselves, or others in harms way, or create conditions which may adversely impact on others.

All SteelconCava Pty LTD management, employees, subcontractors and visitors will:

- Be accountable in the areas of incident, injury and illness prevention, hazard identification, control and removal, health preservation and promotion.
- Undertake risk and hazard assessments prior to commencing activities to ensure any risk of injury or a health effects is low as reasonable achievable.
- Develop health and safety awareness throughout the company and actively encourage the participation of employees in the continuous improvement program. Actively encouraging employees also extends to incident and near miss reporting.
- Provide adequate resources to ensure the highest standard of health and safety is maintained.
- Establish, maintain and seek continuous improvement through procedures and methods to eliminate health and safety impacts.
- Maintain amongst employees, subcontractors and visitors an awareness of their health and safety responsibilities.
- Provide information as required to Client's OH&S and Community Representatives.
- Actively participate in Client specific health management policies, ie Lead Management.

The responsibility for ensuring the implementation of this policy resides with SteelconCava Pty LTD Managing Directors.

All personnel working within our Company have an equal responsibility to conduct themselves in a manner which strives to ensure the implementation of this policy.

This includes:

- Compliance with all relevant legislation, company procedures and policies, Client requirements.
- Maintaining a safe and tidy work area
- Reporting of any hazards, incidents and near misses.
- Use, wear and maintain protective clothing and instruments provided.

Mr Adrian Hogue
Managing Director
1st July 2009



STEELCON CAVA PTY LTD ACN 127 174 976

Head Office:
PO Box 1613, No 4 Northridge Road
Mount Isa Qld 4825
Phone: 07 4743 3766 Fax: 07 4743 8909

PO Box 1552
1130 Kingsford Smith Drive
Eagle Farm Qld 4009
Phone: (07) 3630 2577 Fax: (07) 3630 2677

FIT FOR WORK POLICY

Steelcon Cava Pty Ltd recognizes the risks associated with persons being not fit for work.

Personnel may be unfit for work due to:

- Being under the influence of illegal drugs
- Being under the influence of alcohol
- Being under the influence of medications – over the counter or prescribed
- Being fatigued
- Have personal issues which may impact on their ability to maintain a safe work environment

Specific procedures are outlined in the Steelcon Cava Pty Ltd Safety Management System to ensure the management of these situations.

Specific policies:

Illegal drugs or alcohol – it is our policy that no employee, sub contractor or visitor will be under the influence of illegal drugs or alcohol whilst undertaking any duties for Steelcon Cava Pty Ltd.

Testing for these substances may occur at any time, and a strict disciplinary process shall be invoked for breach of this policy. Rehabilitation is offered as a part of this process.

Medications – it is our policy that employees must declare all medication that they have taken, and that a risk assessment shall be conducted by HSEC personnel to determine if that person can continue in their normal work capacity or other work arrangements need to be made to ensure that maintenance of a safe work environment for all personnel.

Fatigue – it is our policy that management of fatigue is both Management and employee responsibility.

Management Responsibilities:

- Arrangements for hours of work to consider the needs, commitments and responsibilities for all employees who are trying to maintain a health and balanced home life
- Roster design to take into account the need for adequate blocks of rest and recreation days to allow for optimal home and work performance
- Tasks shall be assessed and scheduled by taking into account fatigue issues, ie complex tasks during day, hot works during nightshift

Employee Responsibilities:

- To regularly assess level of fatigue and fitness for work
- To present to work in a fit state
- To ensure activities outside of work hours do not compromise their ability to carry out their work duties without risk of injury or illness to themselves or others
- To immediately notify their Supervisor or HSEC personnel if they believe that are too tired to perform work activities safely
- That they will not operate equipment or will immediately on becoming aware of feeling tired cease operation of equipment and notify Supervisor or HSEC personnel

Steelcon Cava Pty LTD management will ensure that all employees, sub contractors and visitors are provided with adequate training in relation to this policy and relevant procedures.

Mr Adrian Hogue
Managing Director
1st September 2009



STEELCON CAVA PTY LTD ACN 127 174 976

Head Office:
PO Box 1613, No 4 Northridge Road
Mount Isa Qld 4825
Phone: 07 4743 3766 Fax: 07 4743 8909

PO Box 1552
1130 Kingsford Smith Drive
Eagle Farm Qld 4009
Phone: (07) 3630 2577 Fax: (07) 3630 2677

LOSS CONTROL POLICY

Steelcon Cava Pty Ltd is committed to effectively reducing loss by implementing Management systems.

The Management systems shall consider the following aspects, which if not monitored and controls implemented, could result in a loss:

- Pre planning of work in all areas
- Adequate Supply and Delivery planning
- Planning of activities which could be implemented should normal work activities be unavailable
- Adequate resources, communication and active participation from employees to ensure industrial action is minimized and/or eliminated
- Audit areas on a regular basis to identify potential issues that may cause future 'downtime'
- Application of risk management techniques
- Planned maintenance
- Adequate stocks or equipment and material to ensure continuation or work activities
- Work method statements for all Project activities

Mr Adrian Hogue
Managing Director
1st September 2009



STEELCON CAVA PTY LTD ACN 127 174 976

Head Office:
PO Box 1613, No 4 Northridge Road
Mount Isa Qld 4825
Phone: 07 4743 3766 Fax: 07 4743 8909

PO Box 1552
1130 Kingsford Smith Drive
Eagle Farm Qld 4009
Phone: (07) 3630 2577 Fax: (07) 3630 2677

REHABILITATION AND RETURN TO WORK POLICY

Steelcon Cava Pty Ltd recognises that there are substantial benefits to be gained from rehabilitation principles and practices and is committed to implementing them at this workplace. We recognise that the *Workers' Compensation and Rehabilitation Act 2003* and the *Workers' Compensation and Rehabilitation Regulation 2003* provide the legislative support for workplace rehabilitation activities.

Experience has shown that workplace rehabilitation assists the healing process and helps restore the worker's normal function sooner. Workplace rehabilitation includes early provision of timely and adequate services, including suitable duties programs, and aims to: -

- maintain injured or ill workers at work or
- ensure the worker's earliest possible return to work or
- maximise the worker's independent functioning and
- provide for durable employment.

This policy has been developed as a joint worker-management agreement.

Steelcon Cava Pty Ltd is committed to:-

- Providing a safe and healthy work environment, but in the event of an injury or an illness, making sure workplace rehabilitation is started as soon as possible in accordance with medical advice.
- Ensuring appropriate suitable duties are made available to injured or ill workers to facilitate their safe and early return to work. These duties must be consistent with the current medical certificate and will be time limited.
- Respecting the confidential nature of medical and rehabilitation information and ensuring there will be both verbal and written confidentiality.
- Ensuring all workers are aware that, in the event of injury or illness, they will be consulted to ensure a structured and safe return to work that will not disadvantage them.
- Complying with legislative obligations with respect to the standard for rehabilitation.
- Adopting a multidisciplinary approach to rehabilitation as required.
- Reviewing this policy and procedures at least every three years to ensure it continues to meet legislative requirements and the needs of all parties.

Workplace rehabilitation procedures have been developed to support this policy. The procedures define key terms, describe key roles and outline steps in the return to work process. A copy of the procedures is available to all employees.

Training shall be conducted as part of the induction process.

Mr Adrian Hogue
Managing Director
1st September 2009



Office and Work shops in Mount Isa





Office and Workshop in Brisbane





Major Projects



Mount Isa 50ML Reservoir Augmentation

- **Construction completed 1999**
- **Client: Mount Isa Water Board**
- **Scope of Works: Concrete reservoir, Pipelines, and associated construction work.**
- **Cost of the project: \$3.8 Million**



Installation of Nine Runway Girders.

- **Completed: August 1998**
- **Client: Mount Isa Mines Ltd.**
- **Scope of Work: Replacement of crane Girders, running rails and associated steelwork.**
- **Cost of the project: \$1.6 Million**

Doomadgee Sewerage System

- **Completed: 1984**
- **Client: Doomadgee Shire council**
- **Scope of Work: Pump stations, access-holes, Pipelines, and associated works**
- **Cost of the project: \$900,000**





Mount Isa Reservoir Augmentation 50ML Water Reservoir





Mount Isa Reservoir Augmentation 50ML Water Reservoir





Other Projects

- ◆ **Project:** Lead Isasmelt
Client: Mount Isa Mines Limited
Scope of Works: Demolition of structural steel Pilot Plant

- ◆ **Project:** Gunpowder Mine
Client: Aberfoyle Resources
Scope of Works: Concrete work for Leeching Plant.

- ◆ **Project:** Rail Line – Bubialo to Guthalungra
Client: Queensland Rail
Scope of Works: Construction of bridges and culverts.

- ◆ **Project:** Tick Hill
Client: Mount Isa Mines Limited
Scope of Works: Pipeline and concrete works

- ◆ **Project:** Ernest Henry Mine
Client: Fluor Daniel
Scope of Works: Civil works – cold storage

- ◆ **Project:** Bridgework - Hughenden
Client: Penna Constructions
Scope of Works: Bridgework construction.

- ◆ **Project:** Various daily / weekly / monthly services
Completed: Ongoing
Client: Xstrata/Mount Isa Mines Limited
Scope of Works: Provisions of ad hoc equipment, construction, fabrication and site services.



Steelcon Cava Pty Ltd

Crushing operation

Aditya Birla Mt Gordon

Loaded and operated the crushing circuit at gunpowder mine for western metals and Aditya Birla Mt Gordon from 2002 until present day.





Steelcon Cava Pty Ltd

Environmental Water Project Birla Mt Gordon

Bioteq Australia

**Constructed and fabricated water and mineral extraction project
for BioteqAustraliapty ltd at the BirlaMt Gordon mine site.**

Project cost \$2,500,000.00





Steelcon Cava Pty Ltd

Filter Press and New Floatation project

Aditya Birla Mt Gordon

Steelcon in association with transfield completed all civil works and machinery hire, for the new filtration and floatation project at Birla Mt Gordon in 2004.

Project costs \$3,000,000.00







Steelcon Cava Pty Ltd

Accommodation Camp

Aditya Birla Mt Gordon

Steelcon supplied all the labour and machinery to construct a 200 man ensuited room camp, including all the laundry blocks, pathways and associated works at the Birla Mt Gordon mine site.

Project costs \$1,500,000.00





Steelcon Cava Pty Ltd

Construction of Haul Road and Fuel Farm Project

Aditya Birla Mt Gordon

Steelcon was engaged as the primary contractor to construct new haul roads and fuel loading facility and all associated works at the Birla Mt Gordon mine site. Western metals were the owner of the mine site at the time.

Project costs \$1,800,000.00





Steelcon Cava Pty Ltd

Environmental Projects

Aditya Birla Mt Gordon

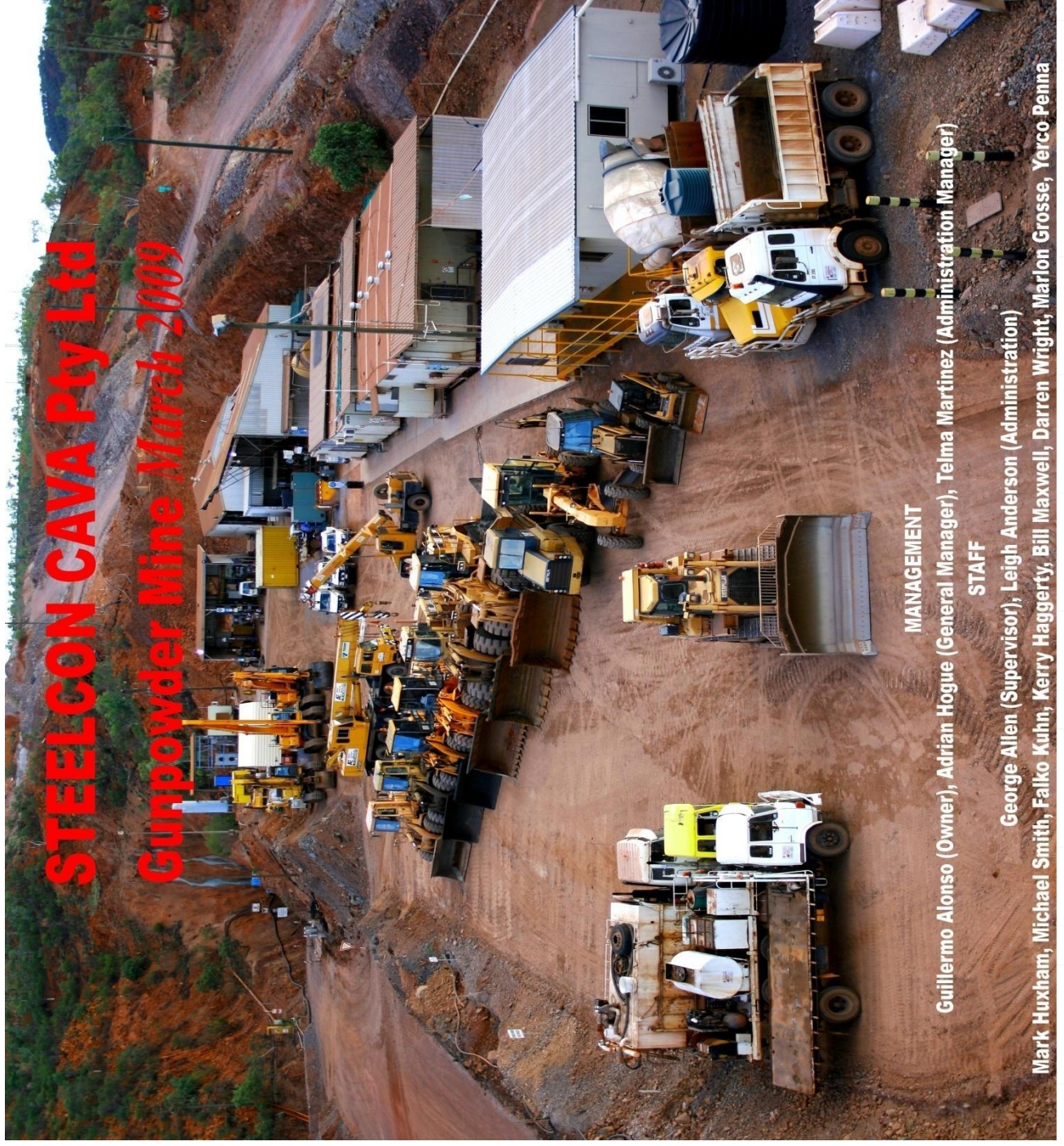
Steelcon cava pty ltd has been engaged to supply all labour and equipment for all the ongoing environmental projects including the contouring of the waste dumps at the Birla Mt Gordon mine site.

Estimated project cost \$8,000,000.00



STEELCON CAVA Pty Ltd

Gunpowder Mine March 2009



MANAGEMENT

Guillermo Alonso (Owner), Adrian Hogue (General Manager), Telma Martinez (Administration Manager)

STAFF

George Allen (Supervisor), Leigh Anderson (Administration)

Mark Huxham, Michael Smith, Falko Kuhn, Kerry Haggerty, Bill Maxwell, Darren Wright, Marlon Grosse, Yercio Penna



Steelcon Cava Pty Ltd

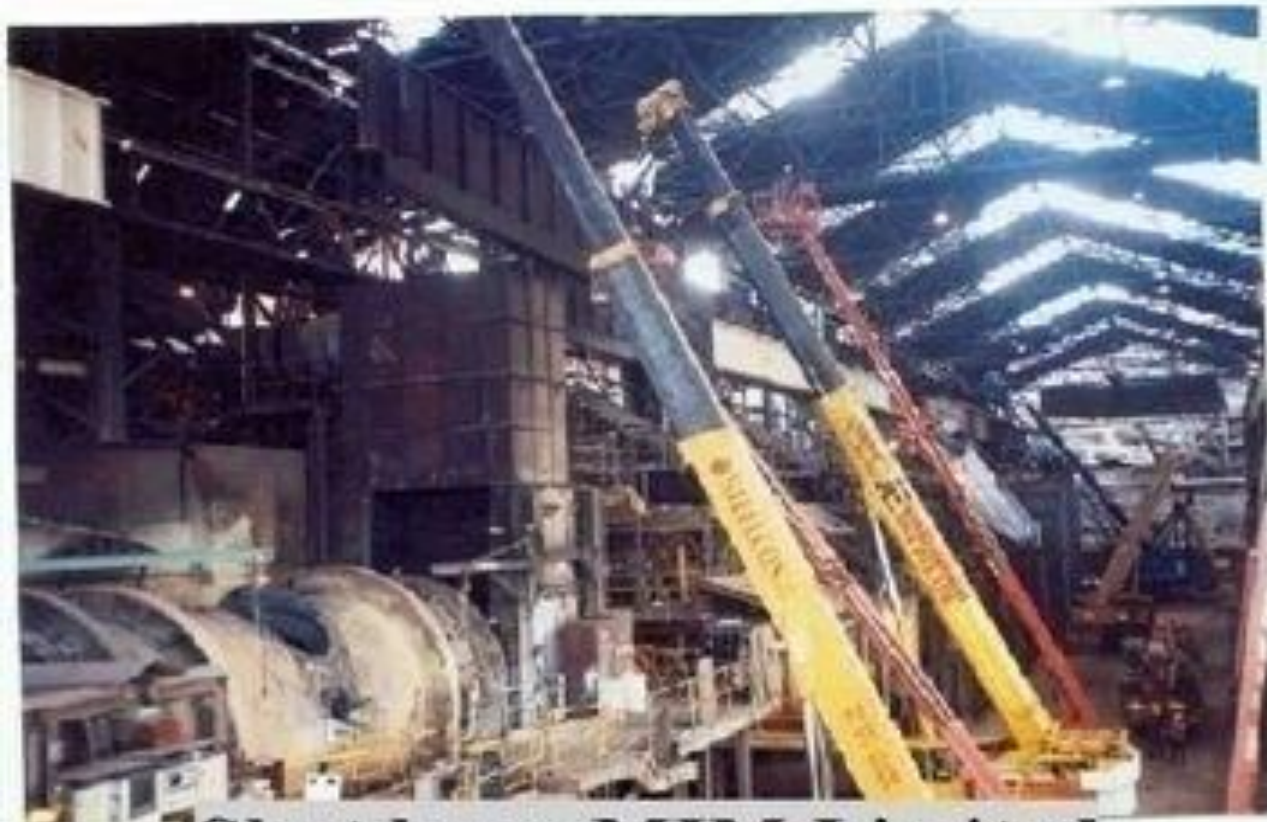
Crane Fleet

- ❖ **TADANO 55TON GT HYDRAULIC CRANE [ASSORTED CHAINS-MAN BOXES-SPREADER BARS]**
- ❖ **TADANO 50TON HYDRAULIC MOBILE CRANE [ASSORTED CHAINS-MAN BOXES-SPREADER BARS]**
- ❖ **FRANNA 20TON ALL TERRAIN [ASSORTED CHAINS-SOLLY BOXES-SPREADER BARS]**
- ❖ **FRANNA 18TON ALL TERRAIN [ASSORTED CHAINS-SOLLY BOXES-SPREADER BARS]**
- ❖ **FRANNA 18TON ALL TERRAIN [ASSORTED CHAINS-SOLLY BOXES-SPREADER BARS]**
- ❖ **FRANNA 18TON ALL TERRAIN [ASSORTED CHAINS-SOLLY BOXES-SPREADER BARS]**









Shutdown MIM Limited





Steelcon Cava Pty Ltd

Loader Fleet

- ❖ CAT 988 G
- ❖ CAT 988 F
- ❖ CAT 966 F
- ❖ CAT 950 F
- ❖ CAT IT28 G [BUCKET-FORKS-MANBASKET-CRANE JIB-STEMMING HOPPER]
- ❖ CAT 226T BOBCAT [4 IN 1 BUCKET]
- ❖ HYUNDAI HL 780-7A
- ❖ HYUNDAI HL 770-7A
- ❖ HYUNDAI HL 757-7A
- ❖ CLARKE 763G BOBCATS [AUGER-TRENCHER- FORKS-SOIL LEVELER-4 IN 1 BUCKET]
- ❖ CASE 590 SUPER L EXTENDER BACKHOE [4 IN 1 BUCKET-ROCKBREAKER-3BUCKETS]
- ❖ CASE 580 SUPER L EXTENDER BACKHOE[4 IN 1 BUCKET-ROCKBREAKER-3BUCKETS]

















Steelcon Cava Pty Ltd

Excavator Fleet

- ❖ **HITACHI 20TON EXCAVATOR [2 ROCK BUCKETS-ROCKBREAKER-MUD BUCKET]**
- ❖ **HYUNDAI R290LC-7 LONGREACH EXCAVATOR [2ROCK BUCKETS-MUD BUCKET-ROCKBREAKER]**
- ❖ **CAT 330B EXCAVATOR [3 ROCK BUCKETS-ROCKBREAKER-MUD BUCKET]**
- ❖ **KOMATSU PC-450LC-6 EXCAVATOR [3ROCK BUCKETS-MUD BUCKET-ROCKBREAKER]**
- ❖ **HYUNDAI R500C-7 EXCAVATOR [3ROCK BUCKETS-MUD BUCKET-ROCKBREAKER]**









Steelcon Cava Pty Ltd

Truck Fleet

- ❖ **MACK PRIME MOVER [SEMI TRAILERS-STEP DECKS-END TIPPERS]**
- ❖ **FORD LOUIEVILLE PRIME MOVER [SEMI TRAILERS-STEP DECKS-END TIPPERS]**
- ❖ **ACCO SERVICE TRUCK**
- ❖ **MERCEDES 6CU/M CONCRETE AGITATOR [HYDRAULIC]**
- ❖ **MERCEDES 2224S 10 MTR TIP TRUCK[SIDE OPENING TAILGATE]**
- ❖ **MERCEDES 10 MTR TIP TRUCK**
- ❖ **MITSUBISHI FV458 10MTR TIP TRUCK [13,500LTR WATER TANK-BATTER SPRAYS]**
- ❖ **HINO 10MTR TIP TRUCK [SIDE OPENING TAIL GATE]**
- ❖ **CAT D250-E DUMP TRUCK**
- ❖ **VOLVO NL10 15,000LTR WATER TRUCK [BATTER SPRAYS-WATER CANNON]**
- ❖ **ISUZU 6TON RAMP TRUCK**
- ❖ **HINO HARRIER 30TON TILT TRAY TRUCK [WINCH]**
- ❖ **FORD CARGO 26TON TILT TRAY TRUCK [WINCH]**
- ❖ **ACCO INTERNATIONAL12TON BODY TRUCK [25,000LTR WATER TANK]**



















Steelcon Cava Pty Ltd

Dozer Fleet

❖ **CAT D9R DOZER [DUAL RIPPERS]**





Steelcon Cava Pty Ltd

Grader Fleet

- ❖ **CAT 140LT GRADER [RIPPER TYNES]**
- ❖ **CHANGLIN PY220 GRADER [RIPPER TYNES]**





Steelcon Cava Pty Ltd

EWP & Forklifts Fleet

- ❖ 35FT GENIE BOOMLIFT
- ❖ 45FT JLG BOOMLIFT
- ❖ 50FT JLG BOOMLIFT
- ❖ 60FT JLG BOOMLIFT
- ❖ 80FT JLG BOOMLIFT
- ❖ 135FT HAULOTTE EWP
- ❖ 16T YALE FORKLIFT
- ❖ 9T HYSTER FORKLIFT
- ❖ 4T NISAN FORKLIFT











Steelcon Cava Pty Ltd

Miscellaneous

TOO NUMEROUS TO ITEMISE PLEASE GO TO APPENDIX A FOR FULL EQUIPMENT LIST.





Appendix A: Equipment & Machinery List

Equipment ID	Equipment Class	Capacity	Vehicle Make	Description
ST033	CRANE	50T	TADANO	50T TADANO MOBILE CRANE
ST037	CRANE	55T	TADANO	55T TADANO GT HYDRAULIC CRANE
ST038	CRANE	20T	FRANNA	20T ALL TERRAIN FRANNA CRANE
ST045	CRANE	18 T	FRANNA	18 T FRANNA CRANE
ST048	CRANE	18 T	FRANNA	18 T FRANNA CRANE
ST049	CRANE	18 T	FRANNA	18T FRANNA CRANE
ST055	CRANE	6 T	CHAMBERLAIN	6 T CHAMBERLAIN CRANE
ST079	EXCAVATOR		HYUNDAI	R290LC-7 LONGREACH EXCAVATOR
ST080	EXCAVATOR	45T	KOMATSU	KOMATSU HYDRAULIC EXCAVATOR PC450LC-6
ST081	EXCAVATOR		CAT	CAT 330B HYDRAULIC EXCAVATOR
ST083	EXCAVATOR	20T	EX200-3	20T HITACHI HYDRAULIC EXCAVATOR
ST084	BOOMLIFT	134FT	HAULOTTE	2008 HAULOTTE HA41PX BOOMLIFT
ST085	EXCAVATOR	50t	HYUNDAI	R500LC-7 HYUNDAI EXCAVATOR
ST086	BOOMLIFT	134FT	HAULOTTE	2008 HAULOTTE HA41PX BOOMLIFT
ST089	IT		CATERPILLAR	CATERPILLAR IT289G INTERGRATED TOOL HANDLER
ST090	CHERRY PICKER			SMALL CHERRY PICKER
ST093	CHERRY PICKER		GENIE	GENIE TRAILER MOUNTED BOOMLIFT
ST096	BOOMLIFT	450AJ	JLG	45FT JLG BOOMLIFT
ST097	CHERRY PICKER	510AJA	JLG	50FT JLG BOOMLIFT
ST098	CHERRY PICKER	600AJ	JLG	60FT JOG 4WD BOOMLIFT
ST099	CHERRY PICKER	800AJ	JLG	80FT JLG BOOMLIFT 4WD
ST104	BOBCAT		CATERPILLAR	CAT 226T BOBCAT
ST107	DOZER		CATERPILLAR	2001 D9R CATTERPILLAR DOZER
ST108	BACKHOE	580 L	CASE	CASE 580 SUPER L BACKHOE
ST109	BACKHOE	590SL	CASE	590SL BACKHOE LOADER
ST110	GRADER		CHANGLIN	CHANGLIN PY220 GRADER
ST111	GRADER	140LT	CATERPILLAR	1998 CATERPILLAR GRADER
ST112	BOBCAT			763G BOBCAT
ST119	FORKLIFT	2.5T	TOYOTA	1995 TOYOTA TRUCK FORKLIFT
ST121	FORKLIFT	9 T	HYSTER	9T FORKLIFT
ST122	FORKLIFT	4 T	NISSAN	4T NISSAN FORKLIFT
ST123	FORKLIFT	4 T	HANGCHA	4T HANGCHA FORKLIFT
ST124	FORKLIFT	4 T	HYSTER	4T HYSTER FORKLIFT
ST126	FORKLIFT	2.5T	NISSAN	2.5T NISSAN FORKLIFT
ST140	LOADER		CATERPILLAR	988F CATERPILLAR LOADER
ST141	WHEEL LOADER		HYUNDAI	HL770-7A HYUNDAI WHEEL LOADER

ST142	LOADER	966F	CATERPILLAR	CATERPILLAR 966F LOADER
ST143	WHEEL LOADER		HYUNDAI	HL780-7A HYUNDAI WHEEL LOADER
ST144	LOADER	988G	CATERPILLAR	988G CATERPILLAR WHEEL LOADER
ST145	LOADER	950	CATERPILLAR	CATERPILLAR 950 LOADER WITH BUCKET
ST146	WHEEL LOADER		HYUNDAI	HL757-7A HYUNDAI WHEEL LOADER
ST200	PRIMEMOVER		FORD	FORD LOUISVILLE PRIME MOVER
ST201	PRIMEMOVER		MACK	MACK PRIME-MOVER TRUCK
ST202	TRUCK	8T	MERCEDES	MERCEDES BENZ
ST202A	MIXER			HYDRAULIC TRANSIT MIXER
ST203	TRUCK		CATERPILLAR	CATERPILLAR D250E DUMP TRUCK
ST204	TRUCK	4.5T	VOLVO	VOLVO NL10 WATER TRUCK
ST205	TRUCK		MERCEDES	MERCEDES BENZ 2224S TIPPER
ST206	TRUCK	6 T	ISUZU	ISUZU FLAT TOP TRUCK WITH RAMPS
ST207	TRUCK	11T	HINO	2004 HINO TIP TRUCK
ST208	TRUCK		INTERNATIONAL	FLAT TOP BODY ACCO TRUCK
ST209	TRUCK	6T	MITSUBISHI	1992 MITSUBISHI CANTER TRUCK
				CONCRETE BATCH PLANT
				PRECISION SCREENING PLANT
ST211	UTE		TOYOTA	TOYOTA HILUX SINGLE CAB
ST214	UTE		TOYOTA	TOYOTA HILUX CAB UTILITY
ST216	LANDCRUISER		TOYOTA	TOYOTA LANDCRUISER WAGON
ST217	DUAL CAB	3T	TOYOTA	1998 TOYOTA DYNA DUAL CAB
ST219	TRAILER		FREIGHTER	FREIGHTER SEMI TIPPER TRAILER
ST219A	TRAILER		FREIGHTMASTER	2006 FREIGHTMASTER TRI AXLE DROP DECK
ST220	TRAILER		FRUEHAUF	FRUEHAUF TIPPER TRAILER
ST221	TRAILER	8	HAULMARK	HAULMARK BOGIE FLAT TOP TRAILER
ST221A	TRAILER		HAULMARK	HAULMARK FLAT TOP TRAILER
ST222	TRUCK		NISSAN	2007 NISSAN MK TRAY TRUCK
ST223	LANDCRUISER		TOYOTA	TOYOTA CAB CHASSIS LANDCRUISER
ST226	UTE		TOYOTA	4X4 TOYOTA LANDCRUISER
ST227	UTE		TOYOTA	2000 TOYOTA HILUX UTE
ST228	UTE		TOYOTA	1994 TOYOTA HILUX UTE
ST230	TWIN CAB		NISSAN	2006 NISSAN NAVARRA
ST231	UTE		TOYOTA	2007 TOYOTA LANDCRUISER
ST237	UTE		TOYOTA	1993 TOYOTA LANDCRUISER
ST240	PATROL		NISSAN	NISSAN PATROL WAGON
ST241	TIP TRUCK	9.4 T	MITSUBISHI	MITSUBISHI FV458 TIP TRUCK
ST242	LIGHT TOWER			LIGHT TOWER 2007 MODEL
ST246	UTE		MITSUBISHI	MITSUBISHI TRITON DUAL CAB
ST250	TRUCK	26T	FORD	FORD CARGO 2421 TIP TRUCK
ST251	TRUCK	11T	HINO	HINO TILT TRAY
ST256	UTE		MITSUBISHI	MITSUBISHI TRITON
ST259	TRUCK	10.5 T	HINO	HINO FLAT TOP TRUCK

ST260	GENERATOR			52KVA GENERATOR SET
ST261	TWIN CAB		TOYOTA	TOYOTA HILUX DUAL CAB
ST262	TRUCK	10	HINO	HINO TIP TRUCK
ST270	COMPRESSOR			COMPARE 400 CFM COMPRESSOR
ST272	WATERCLEANER			SPITWATER HP2015 WATER CLEANER
ST275	W/BLASTER	6000 PSI		WATER BLASTER
ST316	OFFICE			PORTABLE CRIB ROOM / OFFICE
	ROLLER			INGERSOL RAND DA 30 ROLLER
ST321	CONTAINER			STORAGE CONTAINER
ST505	WELDER	400		LINCOLN TM ELECTRIC WELDER
ST512	WELDER			PORTABLE 400 AS WELDER
ST513	WELDER			DIESEL WELDER
ST518	WELDER	240 V		240V ELECTRIC WELDER
ST520	WELDER	500		TRANSMIG 500 WELDER
ST522	WELDER	350		TRANSMIG 350 WELDER
ST526	WELDER	240 V		240 V MIG WELDER
ST530	WELDER	400		TRANSARC 400 WELDER
	COMPRESSOR			PILOT AIR COMPRESSOR
	COMPRESSOR			PILOT EV1711 COMPRESSOR
ST560	COMPRESSOR	5 CFM		AIR COMPRESSOR 5 CFM
ST561	COMPRESSOR	CR330		COMPARE COMPRESSOR
ST571	THREADER			PIPE THREADING MACHINE
ST572	BLASTER			60 LITRE GRIT BLASTER
ST590	BARRICADE			STEEL BARRICADE
ST600	GENERATOR			5KVA GENERATOR
ST610	LIGHTS			FLASHING WARNING LIGHTS



STEELCON CAVA PTY LTD

MACHINERY & EQUIPMENT MAINTENANCE

Following Is A Brief Copy Of Some Of The Thorough Maintenance Program That Steelcon Cava Pty Ltd Run For All Of The Company's Plant And Equipment

SERVICE HISTORY HL770-7A HYUNDAI LOADER

<u>DATE</u>	<u>HOURS</u>	<u>DESCRIPTION</u>	<u>COST</u>
15/03/2009	253	CARRY OUT 250 HR SERVICE AND REPLACE DAMAGED	
		GREASE LINE.	
		EAGLE EQ. INV# INO11886 GREASE LINE	124.8
		EAGLE EQ. INV# INO11661 250HR SERVICE KIT	413.94
		EAGLE EQ. INV# INO11661 OIL SAMPLE KIT (9)	270

ACCUM. COST 808.74

SERVICE HISTORY KOMATSU PC450 EXCAVATOR

<u>DATE</u>	<u>HOURS</u>	<u>DESCRIPTION</u>	<u>COST</u>
17/03/2009		GREASE AND CHECK OVER	
20/04/2009	679HRS	CARRY OUT 1000HR SERVICE, REPLACE 15 HYDRAULIC HOSES, REMOVE AND RESEAL ISOLATION VALVE, REPLACE INJECTORS, TURBO, WATER PUMP, REPAIR OIL LEAKS AT MAIN PUMP, REPAIR A/C AND WIRING, REMOVE OIL COOLER AND REFIT COOLING SHIELDS AND BLOW OUT RADIATOR. REPLACE FAN HUB BEARINGS, TEST RUN AND CARRY OUT PRESSURE CHECKS. HYDRAULINK INV# 050897 FITTINGS	398.07
5/02/2009		KOMATSU INV# 208401 ASORTED PARTS	4066.15
		KOMATSU QUOTE # 16 ASORTED PARTS	5453.99

ACCUM. COST 9918.21

SERVICE HISTORY CAT D9R DOZER

<u>DATE</u>	<u>HOURS</u>	<u>DESCRIPTION</u>	<u>COST</u>
28/03/2009	11258	CARRY OUT 250HR SERVICE HASTINGS DOC.# 27C426387 250HR SERVICE KIT	357.39
14/04/2009	11336	FIT PATCHES TO BLADE	

ACCUM. COST 357.39



STEELCON CAVA PTY LTD

IN ASSOCIATION WITH

BIOTEQ AUSTRALIA PTY LTD

Steelcon cava pty ltd in association with Bioteq Australia pty ltd would be only too happy to provide a water and mineral extraction service for whatever contaminated problems that you may have.

Obviously all situations are different depending on the minerals and acidity of the water in your particular situation.

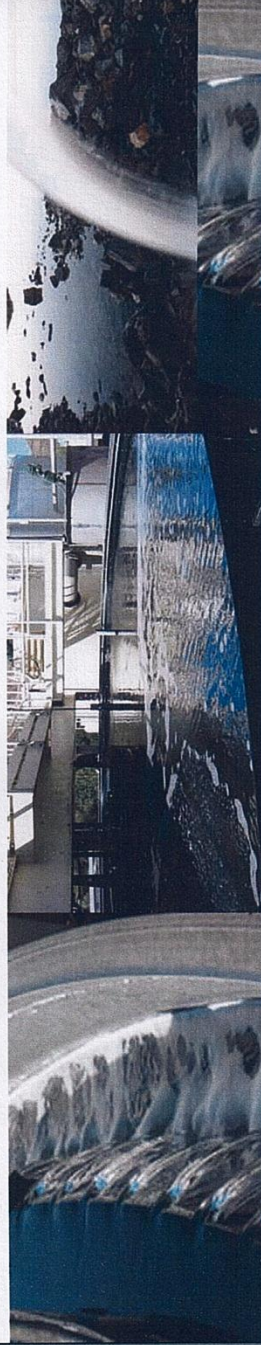
Following is a brief summary of how the Bioteq system works.

Please don't hesitate to contact us in association with Bioteq for any information that you may require.

BIOTEQ

ENVIRONMENTAL TECHNOLOGIES INC.

Sustainable Water Treatment Solutions



MACLEAN'S

Canada's Top 50
Most Socially
Responsible
Corporations

PDAC2009
PROGRESSIVE DYNAMICS AWARD FOR CORPORATE RESPONSIBILITY

Environmental
and Social
Responsibility
Award



Environmental
Protection Award



THE GLOBE AND MAIL

Environmental
Excellence Award



Top New Exporter



Presentation Outline



- Overview and history
- Present status
- Future plans
- Corporate summary

TSX:BQE

BIOTEQ ENVIRONMENTAL TECHNOLOGIES INC

www.bioteq.ca



BioteQ Environmental Technologies



- BioteQ is a water treatment company that treats wastewater contaminated with dissolved metals and/or sulphate
- We convert waste into a useful resource, producing saleable by-products and clean water from wastewater
- We generate revenue from product sales, plant sales and water treatment fees
- Our operations generate recurring revenues and long-term cash flow

TSX:BQE

BIOTEQ ENVIRONMENTAL TECHNOLOGIES INC

www.bioteq.ca



Bioteq's water treatment technologies



➤ Sulphide precipitation technologies

- Selectively recover dissolved metals from wastewater
- Cu, Ni, Zn, Co, Cd, Pb, Hg, Si, Se, As, Sb, Mn, Fe, Al
- No sludge product for disposal; lower life cycle costs



➤ Ion exchange technologies

- Reduce sulphate concentrations to meet new regulations
- Produce clean water and saleable gypsum
- No sludge product for disposal; lower life cycle costs

TSX:BQE

BIOTEQ ENVIRONMENTAL TECHNOLOGIES INC

www.bioteq.ca



Established Customers



We work with the world's leading
resource companies, utility operators,
and regulators:

Xstrata
Aditya Birla
Koza Gold
EPCOR

Jiangxi Copper
Capstone
Breakwater
US EPA

TSX:BQE

BIOTEQ ENVIRONMENTAL TECHNOLOGIES INC

www.bioteq.ca



Drivers for Bioteq's Customers



- Reduce environmental liability, comply with regulations
- Improve water conservation and re-use because of scarce water resources
- Reduce life cycle costs of water treatment by applying lower cost alternatives and generating revenue from recovered by-products

TSX:BQE

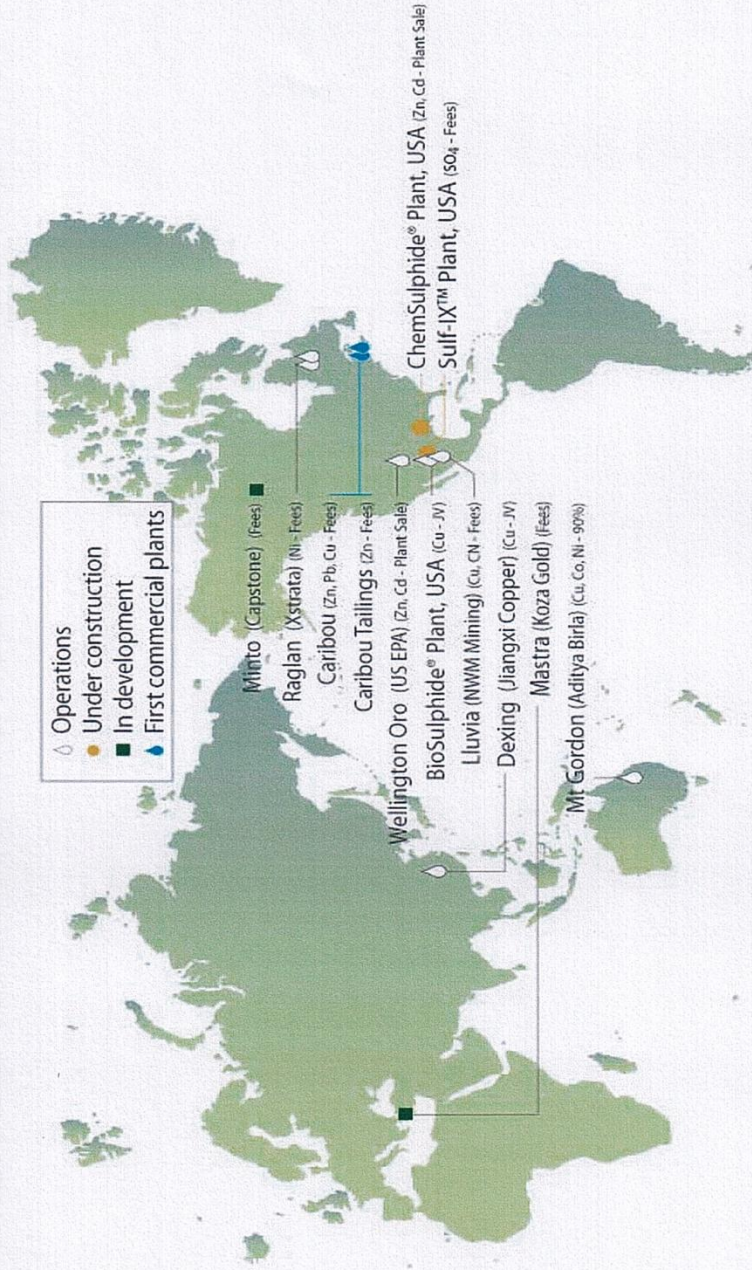
BIOTEQ ENVIRONMENTAL TECHNOLOGIES INC

www.bioteq.ca



BioteQ's Global Operations

- Operations
- Under construction
- In development
- First commercial plants



TSX:BQE

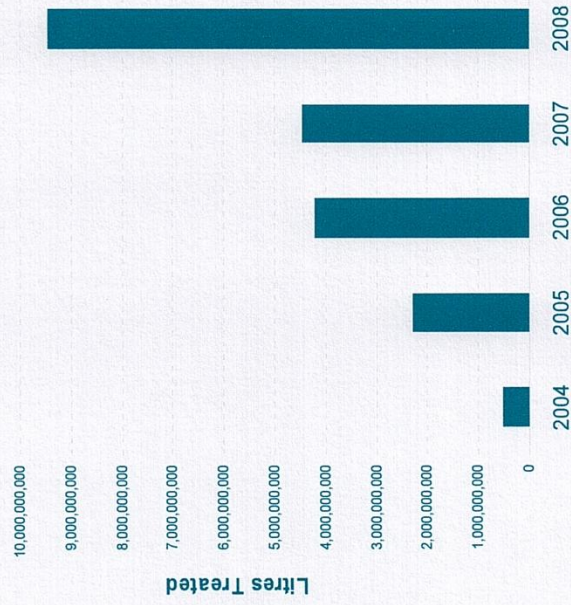
BIOTEQ ENVIRONMENTAL TECHNOLOGIES INC

www.bioteq.ca



Performance to 2008

Volume of Water Treated
Litres



- **9.4 billion litres of** treated wastewater
- **3 million pounds of** recovered metals

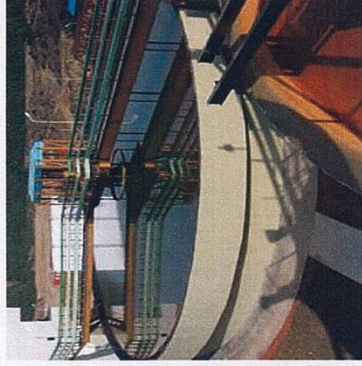
TSX:BQE

BIOTEQ ENVIRONMENTAL TECHNOLOGIES INC

www.bioteq.ca



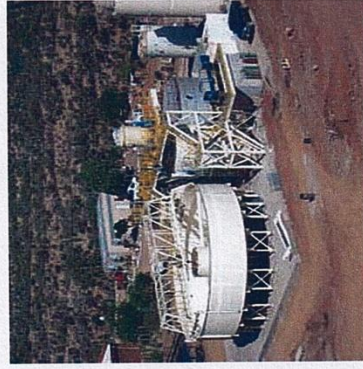
Performance is Improving



- We have made operational adjustments to reduce costs and generate profits
 - Our current plant operations are generating positive cash flow
 - We are working to re-start inactive operations:
 - Mexico
 - Arizona
 - Australia



Market Strategy for Expansion



- Expand work within mining and metallurgy market
- Diversify into power generation market using Bioteq's existing technologies
- Diversify into oil sands market using Bioteq's existing technologies

TSX:BQE

BIOTEQ ENVIRONMENTAL TECHNOLOGIES INC

www.bioteq.ca



Well Positioned for Growth



- We are investing in R&D to apply our existing technologies in new markets
- We have cash and remain debt-free; estimated \$8.5M in working capital
- We are actively working on new development projects that don't require our capital
- Our operations will continue to generate recurring revenues

TSX:BQE

BIOTEQ ENVIRONMENTAL TECHNOLOGIES INC

www.bioteq.ca



Capital Market Summary

- Major shareholders:
 - Water, environment, SRI funds, based in UK & Switzerland
 - Management (10%)
- Average daily trading volume (30 day) 130,000
- Outstanding shares (basic) 66.1 million
- Outstanding shares (diluted) 71.3 million

TSX:BQE

BIOTEQ ENVIRONMENTAL TECHNOLOGIES INC

www.bioteq.ca



Experienced Management Team

Brad Marchant, B.Sc. (Biochem), M.A.Sc.(Eng.), CEO

Metallurgist, operations experience with Placer Dome, formerly Exec. VP and COO for Triton Mining Corp (TSE)

David Kratochvil, Ph. D., P. Eng., President and COO

Chemical engineer, specialist in biotechnology and water treatment operations

Rick Lawrence, Ph. D., P. Eng, Vice President & Senior Consultant

Biohydrometallurgist, 35+ years experience in acid drainage

Paul Kim, C.A, VP and Chief Financial Officer

10 years experience in public practice and public companies

Tanja McQueen, MBA, VP Corporate Development

20 years experience in marketing, communications, and corporate management

Mike Bratty, M. Eng., P. Eng., Manager, Development Engineering

Biochemical engineer, 15 years experience in mining and environmental engineering operations

TSX:BQE

BIOTEQ ENVIRONMENTAL TECHNOLOGIES INC

www.bioteq.ca



Strong Board of Directors

George Poling, Ph.D., P.Eng., Consultant, Former Head of Mining Dept., UBC

Clem Pelletier, B.Sc. (Chem.), Founder and CEO, Rescan Environmental

Brad Marchant, M.A.Sc.(Eng.), CEO

Ken Williamson, P.Eng., MBA, Former Vice Chairman Midland Walwyn/Merrill

Kelvin Dushnisky, M.Sc., LLB, Exec VP, Corporate Affairs Barrick Gold Corp

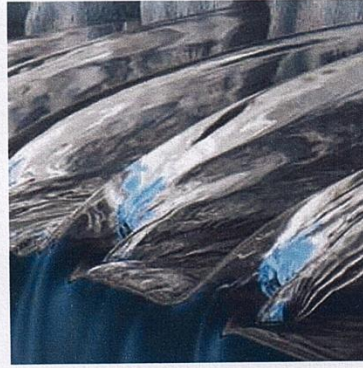
Bruce Burton, CA, MBA, Business Consultant

TSX:BQE

BIOTEQ ENVIRONMENTAL TECHNOLOGIES INC

www.bioteq.ca

Investment Opportunity



- BioteQ treats wastewater; a market driven by regulation and environmental compliance, and increasing awareness about the value of water
- We have proven and patented technology, an established customer base, and recurring revenue
- We are diversifying our markets
- We have cash and people to drive growth
- BioteQ is an investment in water and the environment

TSX:BQE

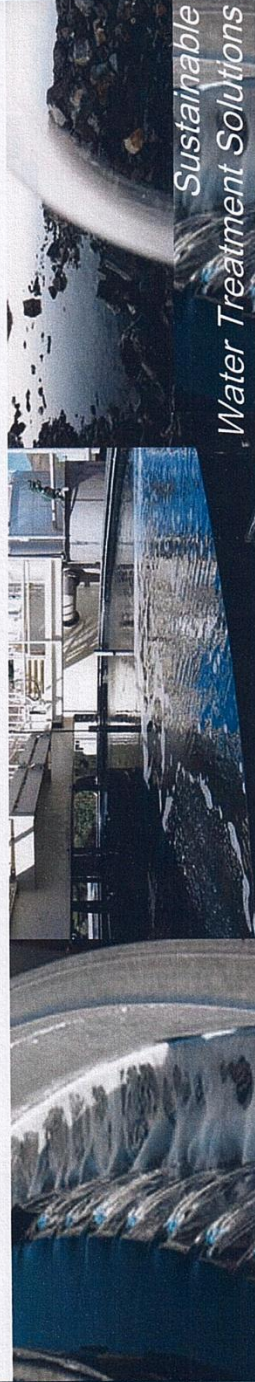
BIOTEQ ENVIRONMENTAL TECHNOLOGIES INC

www.bioteq.ca

BIOTEQ
ENVIRONMENTAL TECHNOLOGIES INC.

TSX:BQE

www.bioteq.ca



*Sustainable
Water Treatment Solutions*

TSX:BQE

BIOTEQ ENVIRONMENTAL TECHNOLOGIES INC.

www.bioteq.ca



STEELCON CAVA PTY LTD
IN ASSOCIATION WITH
GUILFOYLE WRECKERS QLD PTY LTD

Please don't hesitate to contact us for any of your demolition needs, in association with Guilfoyle Wreckers Qld Pty Ltd and Steelcon Cava Pty Ltd machinery and equipment supply, no demolition project is too small or too big.

Following is a brief summary of Guilfoyle Wreckers Qld Pty Ltd qualifications.

GUILFOYLE WRECKERS (QLD) P/L

ABN: 42 133 683 100

Guilfoyle Wreckers (QLD) P/L

ABN: 42 133 683 100

Email: info@guilfoylewreckers.com.au
PO BOX 818, HAMILTON QLD 4007
Phone: (07) 3868 2703
Fax: (07) 3868 2705
Phone: 0412 731 083

Future Venture with STEELCON CAVA Hydraulics P/L

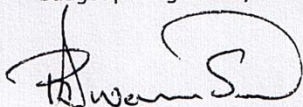
Mt Isa

We submit for your consideration our licensing details with Queensland Workplace Health & Safety, Insurances details and EPA transport certification for unrestricted demolition, asbestos remediation and contaminated materials plant and machinery removal and disposal.

Guilfoyle Wreckers (QLD) P/L has experienced personnel with 20 + years in the demolition and asbestos removal industry, we have in the past undertaken major projects in Mt Isa for both Xstrata Mines and Mica Creek Power Station in conjunction with Steelcon Cava Mt Isa P/L on both joint venture and sub contract basis and have both a sound and stable working and contractual relationship.

Steelcon Cava P/L have available the machinery and equipment to offer competitive and budget controlled project supply to carry out any works in an efficient, expedient and work safe manner.

We trust that we can be of service to you in the future and offer our services and budget pricing for any future projects.



Dick Swainson
Manager

Phone: (07) 3868 2703
Fax: (07) 3868 2705

1130 Kingsford Smith Drive
PO Box 818, HAMILTON QLD 4008

Guilfoyle Wreckers (QLD) P/L
ABN: 42 133 683 100

COMPANY PROFILE

Safely LEADING
the industry in
Specialised Demolition & Asbestos Solutions.

Phone: (07) 3868 2703
Fax: (07) 3868 2705

1130 Kingsford Smith Drive
PO Box 818, HAMILTON QLD 4008

CONTENTS

1. COMPANY DETAILS

Overview

- Company Accountant
- Company Solicitor
- Company Bank

2. COMPANY PROFILE

Vision and Values

Quality Policy

Workplace Health Safety & Environmental Policy

3 KEY MANAGEMENT

Tony Fawcett

4. KNOWLEDGE and EXPERIENCE

Recent Projects

Past Projects

APPENDICES

Certificate of Currency

Licences

Business Certificate

1.0 COMPANY DETAILS

Overview

Guilfoyle Wreckers (QLD) P/L was registered as a Proprietary Limited Company in October 2008.

The Company registered offices is at:

- 1130 Kingsford Smith Drive, EAGLE FARM QLD 4009

Guilfoyle Wreckers (QLD) P/L was registered in October, 2008 as a sister company to Guilfoyle Wreckers (NSW) Proprietary Limited Company in Queensland. After the sale of my already successful business I still recognised that there was a specific market niche that would allow me to operate successfully. Guilfoyle Wreckers (NSW) P/L is a separate entity from Guilfoyle Wreckers (QLD) P/L but we both work closely together.

The Company is wholly owned and operated by the Managing Directors, Thomas Fitzpatrick. The Guilfoyle Team have had a longtime association in the demolition and asbestos industry covering a cross section of industries and commerce including power stations, hospitals, government buildings, shopping centres, factories, high rise buildings and petrochemical plant.

Accountants:

Our Company Accountants are
Melissa Wheeler Accounting in Sydney
(02) 9824 5075.

Solicitor:

Mark Woolley of Mc Inness Lawyers in Brisbane

Bank:

The Company's banking is conducted through the Australian and New Zealand Banking Group Limited (ANZ Bank) Queen Street, Brisbane.

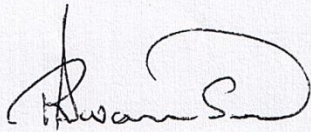
2.0 COMPANY PROFILE

Guilfoyle Wreckers (QLD) P/L is a privately owned company, operated out of Brisbane. Its prime objective is to operate in a specific market niche of the demolition, asbestos removal, roofing and reproofing, hazardous substances and contaminated materials handling and site remediation solutions, which are technically suitable and socially responsible.

Established in the industry with more than 20 years of experience, Guilfoyle Wreckers is a wholly owned Australian company. The company's involvement with demolition and asbestos removal covers a cross section of industries and commerce including power stations, hospitals, government buildings, shopping centres, factories, high rise buildings and petrochemical plant.

Guilfoyle Wreckers (QLD) objective is to become a leader in the field of Demolition and Asbestos Removal through a high standard of Quality and Workplace Health & Safety Management and continuous improvement of its critical processes together with adherence to good management practices. The Team is dedicated to supplying a range of services to its clients and providing invaluable expertise and professional knowledge of the industry.

Guilfoyle Wreckers (QLD) P/L Ltd intends to operate its business according to the broad parameters set out in this manual. It has been prepared by our small team and acts as our guide in all our business operations.



Dick Swainson
Managing Director

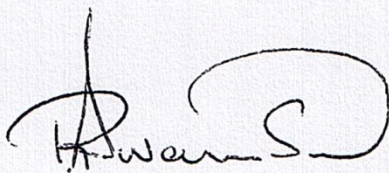
QUALITY POLICY STATEMENT

The management of Guilfoyle Wreckers (QLD) P/L recognises the importance of having a clear understanding of the demolition and environmental parameters of our customers. The Company is committed to providing services for demolition, asbestos removal, hazardous substances and contaminated materials handling, and site remediation solutions, which are technically suitable and socially responsible.

Our company is committed to:

- Quality of demolition services provided to meet and where possible exceed customer expectations;
- Project Teams being supported by Specialist Technical skills as necessary for the successful completion of each project;
- Constantly seeking technical solutions to improve services and reduce end user pricing without affecting quality;
- Using and maintaining preferred suppliers as measured based on quality, performance and pricing;
- Consistency and reliability which will continue to form the basis of all business alliances and practices;

Each employees, worker and contractor is integral to the success of the company, and therefore each worker is encouraged and supported in participating fully in its success through efficient quality management practices.



Dick Swainson
Managing Director

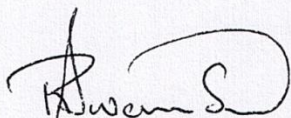
WORKPLACE HEALTH & SAFETY & ENVIRONMENTAL POLICY

Guilfoyle Wreckers (QLD) P/L Management's WH&S and Environmental policy is to manage its services so as to protect the health and safety of its employees, the public, the environment, its assets and the community in accordance with the Workplace Health and Safety Act 1995 and all other relevant statutory and regulatory requirements required by the Demolition Industry. Our Safety Management Plan will be incorporated into the management system to provide all other relevant information to our customers.

The company is to ensure that every employee works in an environment where direct efforts are made to prevent accidents, injury and disruption to health from any foreseeable work hazards and risks by:

- Providing and maintaining safe working procedures and operations through the implementation of an effective Work Safety Plan for each project;
- Reducing personal injuries and occupational illness reports from our employees, contractors and members of the public within our workplaces through management, consultation and co-operation;
- Communicating with employees, contractors, communities and our customers to ensure all stakeholders workplace health & safety & environmental expectations are met;
- Ensuring all workers and contractors are trained and adequately supervised to ensure awareness of their obligations and that all activities are conducted without risk to themselves or others;
- Taking care of the environment as a key part of our responsibility to the community;
- Continually monitoring and reviewing our Health, Safety & Environmental program in conjunction with our Management System Review meetings;
- Minimising any losses caused through property damage, fire and security;
- Provide adequate resources and funds to improve safety & environmental issues; and
- Protect the environment from damage caused by our activities by complying with all environmental statutory and regulatory requirements within our area of expertise;

Workplace Health & Safety and Environmental Management in the Workplace is of primary importance to for Guilfoyle Wreckers (QLD) and therefore a policy of working safely at all times is a condition of employment and, whatever project all workers and contractors have a duty to minimise any risk to ourselves; other employees; customers; contractors; and the general public.



Dick Swainson
Director

Guilfoyle Wreckers (QLD) P/L
ABN: 42 133 683 100

DICK SWAINSON – MANAGER

- **Specialist Asbestos Removal Operator's Certificate (Qld)– Cert No: 790**
- **Unrestricted Demolition Licence – Qld NSW, NT & VIC**
- **Asbestos Removal Licence – QLD, NSW**

Dick has worked as Project Manager since 1998 and has had a long association in the demolition and asbestos industry covering a cross section of industries and commerce including power stations, hospitals, government buildings, shopping centres, factories, high rise buildings and petrochemical plant.

TONY FAWCETT – Project Manager

- **Demolisher D1; D2; D3**

Tony has worked in the Asbestos and Demolition industry for more than **20 years**. He has achieved the work cover accredited position of licence holder for an asbestos contractor and demolition removal.

He has supervised numerous projects ranging in size and quantity from small residential dwellings up to and including large commercial projects valued in excess of \$1.5 million dollars

He has extensive knowledge and skills gained over many years in all type of asbestos removal, disposal and site redemption.

Tony has been the demolition supervisor of difficult industrial complexes, chemical plants, power stations, laboratories and heritage listed projects.

Phone: (07) 3868 2703
Fax: (07) 3868 2705

1130 Kingsford Smith Drive
PO Box 818, HAMILTON QLD 4008

PAST WORKS

Q Build (Various) Asbestos roof removal and replacement program .

Bundaberg Sugar – Complete demolition to Nambour Sugar Mill.

Amtcor Packaging Petrie Mill – Removal of asbestos and the demolition of No: 1 Boiler and decommissioning of redundant services.

Royal Women's Hospital – the demolition of the Lady Ramsay Building – 5 storey and the Royal Women's Hospital Block – 7 storey's and associated link ways.

APPENDICES

CERTIFICATES OF CURRENCY:

- **Combined General & Product Liability Insurance**
- **Workers' Compensation Policy**

Certificate of Currency

WorkCover
Queensland

1. Statement of coverage

The Accident Insurance Policy covers the full amount of the employer's liability under the *Workers' Compensation and Rehabilitation Act 2003*.

This Certificate is valid from: 05 December 2008 to 30 June 2009

The information provided in this Certificate of Currency is correct as at: 05 December 2008

2. Employer's Information

Policy number

WCA001204992

Employer name

Guilfoyle Wreckers (QLD) Pty Ltd

ABN

12133683100

ACN / ARBN

133683100

3. Important Information

Your worker's compensation insurance policy has been renewed and is current to 30 June 2009, providing you pay your premium by the due date.

For further information, please contact WorkCover Queensland on 1300 362 128 or visit our web site at www.workcoverqld.com.au.



CERTIFICATE OF CURRENCY

This is to confirm that this Insurance Contract is current unless subsequently cancelled and subject at all times to the terms, conditions and exclusions of this Policy.

NAME OF INSURED: Gullfoyle Wreckers (QLD) Pty Ltd
INSURER: 100% underwritten by certain underwriters at Lloyd's
POLICY TYPE: Public and Products Liability
SITUATION: Worldwide excluding USA/Canada
POLICY NUMBER: XO029570X/6670
PERIOD OF INSURANCE: 19th November 2008 to 30th June 2009
BUSINESS DESCRIPTION: Principally Demolition, Asbestos Removal & Property Owners/Occupiers and Associated Activities
INTEREST INSURED: The Insured's legal liability to third parties to pay compensation in respect of death, illness, personal injury and/or property damage occurring during the period of insurance as a result of an occurrence and happening in connection with the business.
LIMITS OF LIABILITY: Public Liability \$10,000,000
In respect of any one occurrence or series of occurrences arising out of the one event during the period of insurance.
Products Liability \$10,000,000
In respect of any one occurrence or series of occurrences arising out of one event and in the aggregate during the period of insurance.
Asbestos Liability \$10,000,000
In respect of any one Claim and in the aggregate during the period of insurance.
Property in the Physical or Legal Control of Insured \$250,000

Signed

Dated

21 November 2008

STERLING INSURANCE PTY LIMITED

APRIL 2008/1 APRIL 2008/256-08

Level 2, 33 Barry St, North Sydney, NSW 2060, PO Box 280, North Sydney, NSW 2060 T 02 9550 4000 F 02 9550 4001
WWW.STERLINGINSURANCE.COM.AU

Guilfoyle Wreckers (QLD) P/L
ABN: 42 133 683 100

BUSINESS CERTIFICATES:

- To perform prescribed activity – Demolisher of building or structure
- To perform prescribed activity – Asbestos Removalist

Phone: (07) 3868 2703
Fax: (07) 3868 2705

1130 Kingsford Smith Drive
PO Box 818, HAMILLTON QLD 4008

Certificate to perform prescribed activity

Issued under the Workplace Health and Safety Act 1995.

GUILFOYLE WRECKERS QLD PTY LTD

of

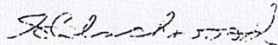
1130 KINGSFORD SMITH DRIVE, EAGLE FARM 4009

has been approved under Part 3A of the Workplace Health and
Safety Regulation 1997 to perform the prescribed activity of:

Type of work Removal of friable and bonded asbestos material >= 10 sq m

Term of certificate:

This certificate is valid from 05/12/2008 until 04/12/2010



Simon Blackwood
Executive Director
Workplace Health and Safety Queensland

Certificate no:
2192921

This Certificate is granted subject to the following conditions:

1. The holder must take all reasonable steps to ensure that the approved criteria assessed for the granting of the certificate continue to be satisfied throughout the term of the certificate as stated in Regulation 29D.
2. During the term of the certificate, Departmental officers may undertake compliance audits of the certificate holder's operations and performance of the specified prescribed activity. The holder must co-operate with officers in the scheduling and conduct of these compliance audits.



Certificate to perform prescribed activity

Issued under the Workplace Health and Safety Act 1995.

GUILFOYLE WRECKERS QLD PTY LTD

of

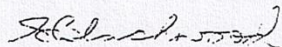
1130 KINGSFORD SMITH DRIVE, EAGLE FARM 4009

has been approved under Part 3A of the Workplace Health and Safety Regulation 1997 to perform the prescribed activity of:

Type of work Demolition of building or structure

Term of certificate:

This certificate is valid from 05/12/2008 until 04/12/2010



Simon Blackwood
Executive Director
Workplace Health and Safety Queensland

Certificate no:
2192922

This Certificate is granted subject to the following conditions:

1. The holder must take all reasonable steps to ensure that the approved criteria assessed for the granting of the certificate continue to be satisfied throughout the term of the certificate as stated in Regulation 29D.
2. During the term of the certificate, Departmental officers may undertake compliance audits of the certificate holder's operations and performance of the specified prescribed activity. The holder must co-operate with officers in the scheduling and conduct of these compliance audits.





Koolat Safety

Statement of Attainment

It is hereby certified that

Adrian Hogue

has been assessed as having successfully completed the

30765QLD Course in Demolition Theory and Application

The qualification certified herein is recognised within the
Australian Qualifications Framework

Certificate 1012

Dated 21/10/2009

Authorised Signature



NATIONALLY RECOGNISED
TRAINING

Koolat Safety
National Provider 31474

A summary of the employability skills developed through this qualification
Can be downloaded from <http://employabilityskills.training.com.au>

Koolat Pty Ltd PO Box 3627 Helensvale TC Helensvale QLD 4212
Phone 07 5665 6777 Fax 07 5665 6264 www.koolatsafety.com.au

